

VPN Setup Guide

(Version 2.00 - 29/06/2007)

1. Software Availability.....	1
2. Version 5 Client install	1
3. Vista support.....	2
4. Client Configuration	3
5. Connecting	4

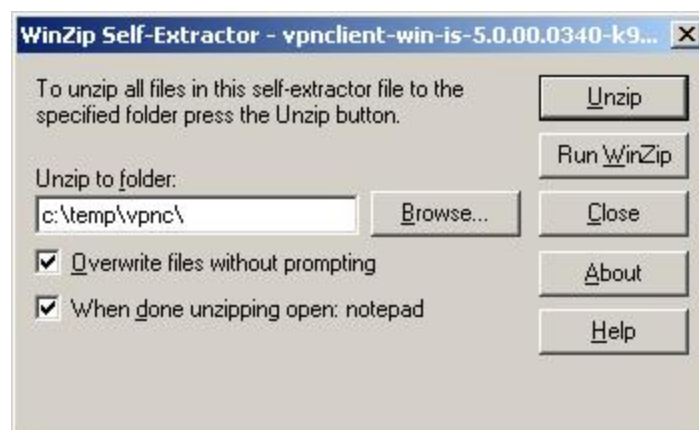
1. Software Availability

The latest version of the VPN software is available at <http://www.medway.org.uk/mgfl/> (the current links are at the bottom of the page).

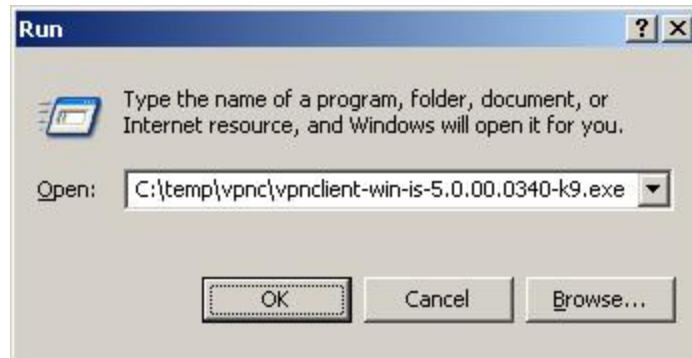
2. Version 5 Client install

Install the software by downloading either the Installshield or MSI file from the page shown above and running it (these instructions are based on the Installshield version, but installation of the MSI version is similar and configuration is identical).

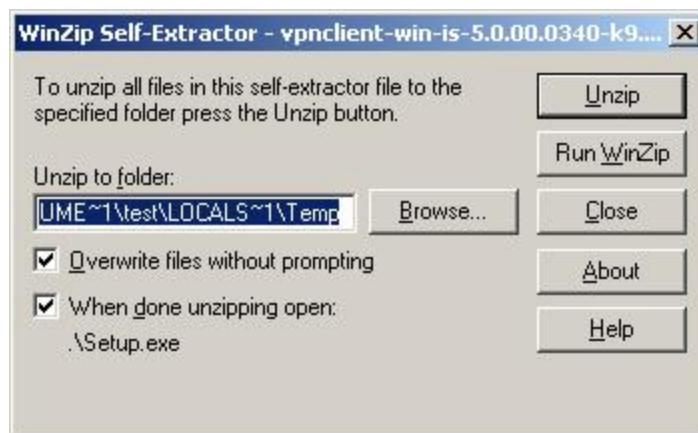
A screen similar to the one below will appear, select a suitable directory as shown to receive the extracted client files and click “Unzip”



Follow the onscreen instructions and when the extraction is complete run the VPN client installer as shown below.



When the client runs you will see a screen similar to the one below. Click “Unzip” to begin the process.



Follow the onscreen instructions until the install process completes.

Finally, leave the “Yes, I want to restart my computer now” radio button on and click “Finish” to reboot your computer.

3. Vista support

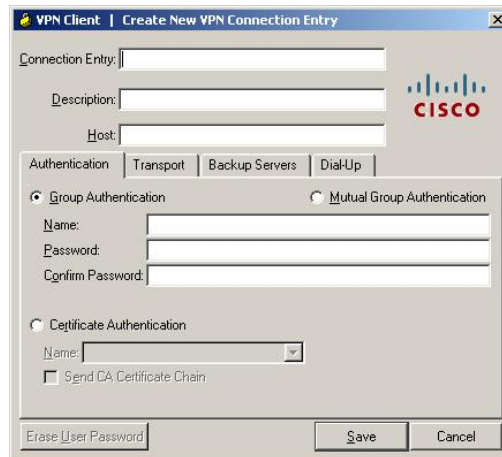
Note that the VPN client does not support the following features with Windows Vista

- Upgrades from Windows XP to Vista
- Start Before Logon
- SmartCard Authentication
- Integrated Firewall
- Installshield
- 64bit OS
- AutoUpdate
- Online help in languages other than English

4. Client Configuration

To open the client click Start / All Programs / Cisco VPN client / VPN client

Click **New**



Enter the following details:

Connection Entry: Medway MGFL

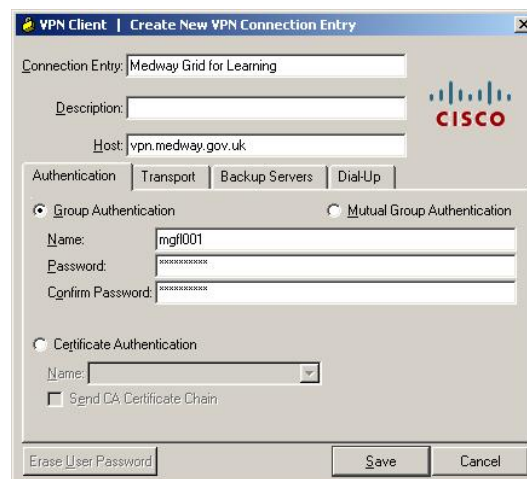
Description (optional):

Host: vpn.medway.gov.uk

Group Authentication:

Name: mgfl001
Password: 5622tiavct
Confirm Password: 5622tiavct

A screen similar to the one below should be shown



Click **Save**

For simplicity using the Options / Simple mode setting will then result in a window similar to the one below



5. Connecting

Highlight the connection entry, Click **Connect**

You will then see the screen shown below where you enter your username and passcode.



Type your PIN followed by the number on your SecurID token (a combination referred to as a passcode)

If you are using the system for the first time, enter only the number on the token in the passcode box and you will be prompted "Do you want to create a PIN – Y or N". Enter Y and then enter the PIN of your choice or N to receive an automatically generated PIN.

You will then be prompted to enter your passcode – this will be you PIN + your tokencode (the number on your SecurID token).

For a quick reference guide to using your SecurID token, follow this link:

<http://www.rsasecurity.com/products/secuid/demos/SecurIDTour/RSASecurIDTour.html>

This should establish the IPsec VPN tunnel and a small yellow padlock should be visible in the system tray near the clock (by default this is in the lower right corner of the screen).



You should now be able to connect to all Medway Grid for Learning services and services on your school network which have remote access enabled.