

Medway Grid for Learning

Policies and Guidance



How to configure web browsers to use an alternative filtering policy

(Version 1.10 - 28/04/2006)

1. Interim notice – Secure connections	1
2. Firefox 1.5	2
3. Internet Explorer.....	3
4. Alternative filtering policies.....	4

Introduction

This document is intended to provide general information and guidance related to connecting school LANs to the broadband Grid for Learning network, and running school systems and servers effectively to deliver a reliable, high performance service. It also provides specific policies adherence to which is necessary for the smooth and effective running of the whole network.

1. Interim notice – Secure connections

With effect from 22/7/2002

Until further notice http over secure sockets layer connections (HTTPS) used to provide secure access to web pages (typically denoted by the https:// prefix) will only be available through the third filtering policy, filtpol3.

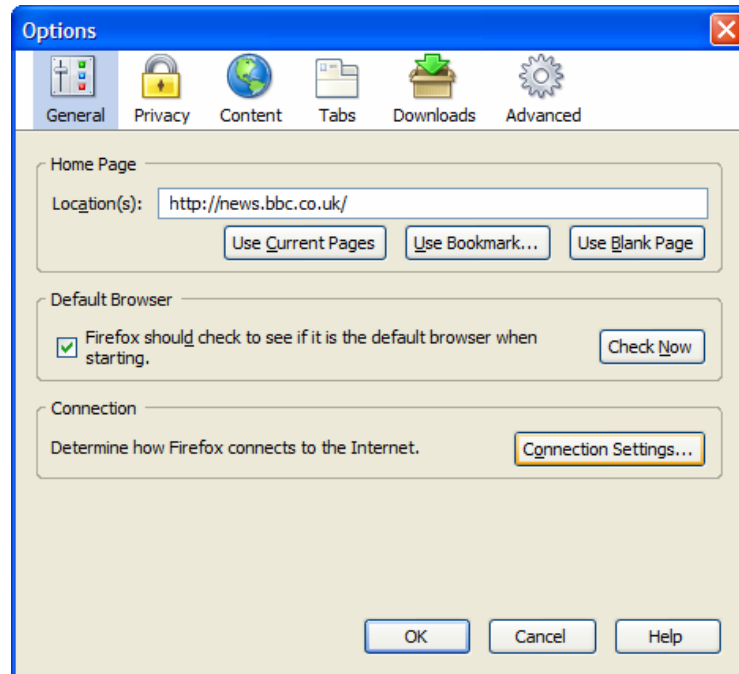
This change has been implemented because several Internet sites use this technology to circumnavigate the filtering system. As an interim measure we will therefore be restricting the use of secure outgoing connections to prevent access to inappropriate material, which is otherwise blocked by the filtering policy. Once the necessary technology becomes available this access will be restored.

If you require continued access to secure sites, for e-purchasing, access to examination results etc, please use the third filtering policy as described in this document.

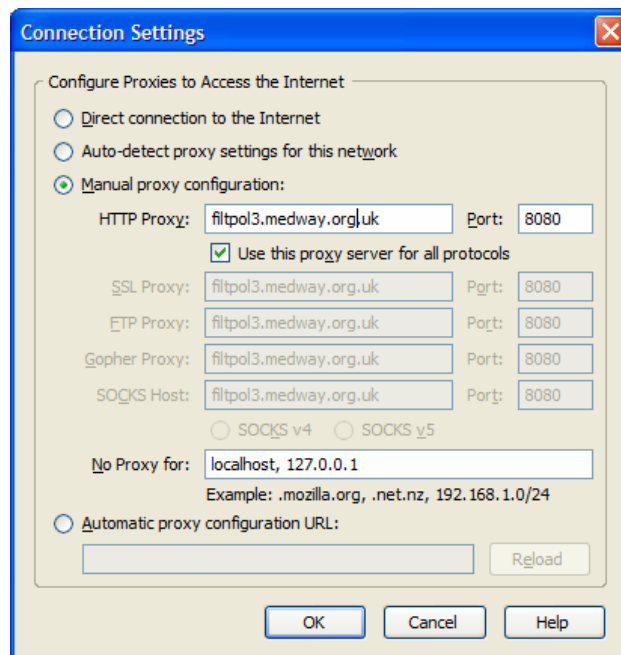
2. Firefox 1.5

These are instructions for configuring Firefox 1.5 to connect to the Internet using an alternative filtering policy on the Medway Grid for Learning. In this example the third filtering policy is shown, filtpol3, other policies are listed at the end

Open Firefox and under the **Tools** menu select **Options**.



Click the Connection Settings...



Enter "filtpol3.medway.org.uk" and "8080" and check the radio buttons as shown above.

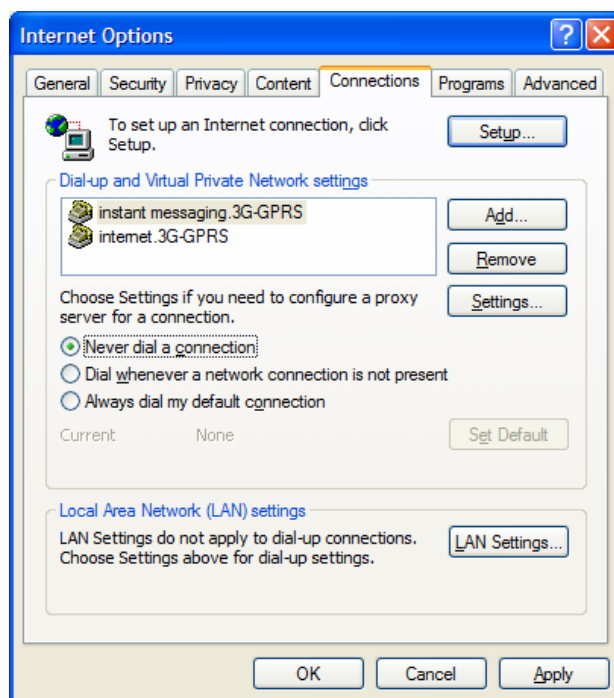
Click **OK** twice. Firefox is now configured to use filtpol3

3. Internet Explorer

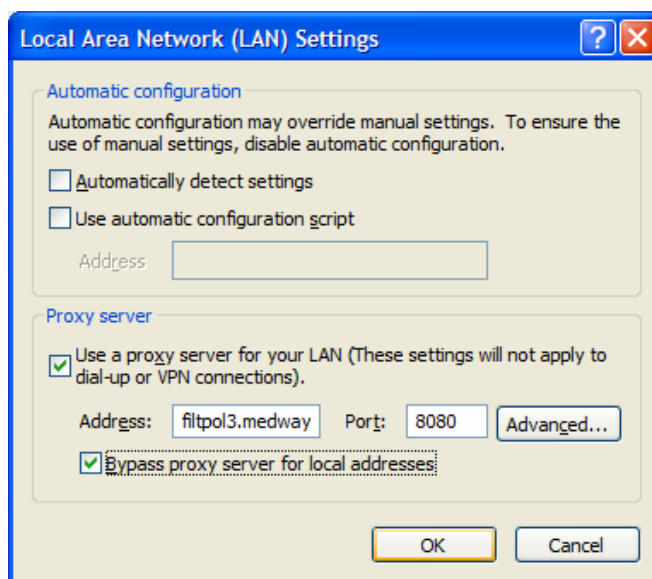
These are instructions for configuring IE 6 to connect to the Internet using an alternative filtering policy on the Medway Grid for Learning.

Load Internet Explorer and under the **Tools** menu select **Internet Options**, as shown below. Select the **Connections** tab and ensure **Never Dial a Connection** is selected.

Click the button at the bottom of the page “**LAN Settings**”



Tick or untick the boxes in this screen, and enter “`filtpol3.medway.org.uk`” in the address box, and “8080” in the port box, so that it matches the screen below.



Click **OK** twice, Internet Explorer is now configured to use filtpol3.

4. Alternative filtering policies

The following filtering policies can be selected in the manner described in this document:

Name: Filtpol3
Proxy host: filtpol3.medway.org.uk
Description: Allows the widest range of access, primarily intended for 6th form and staff use.

Name: SecNG
Proxy host: secng.medway.org.uk
Description: The same as the standard secondary policy except that the games category is not allowed.

Name: SecNING
Proxy host: ning.medway.org.uk
Description: The same as the SecNG policy except that the Google and Yahoo image library sites are not allowed.

For a full description of the standard filtering policies please see the filtering policy documentation available at <http://www.medway.org.uk/mgfl>