

# Medway Grid for Learning

## Policies and Guidance



# Streaming Media Services Operation Guide

(Version 1.60 - 01/02/2007)

1	Streaming Media Services .....	1
1.1	General Overview Streaming Media Services.....	1
1.2	Supported technologies.....	1
1.3	Methods of access to Streaming Media Services .....	2
2	RealOne Player configuration .....	2
3	Windows Media Player configuration .....	4
4	Sites to visit after configuration .....	5

## Introduction

This document is intended to provide general information and guidance related to connecting school LANs to the broadband Grid for Learning network, and running school systems and servers effectively to deliver a reliable, high performance service. It also provides specific policies adherence to which is necessary for the smooth and effective running of the whole network.

## 1 Streaming Media Services

### 1.1 General Overview Streaming Media Services

Streaming media describes media where data is transferred over a period of time during which the audio and/or video components are displayed. This means that a large quantity of data can be accessed, and it is not necessary to wait for a long time whilst it is downloaded in its entirety. These technologies includes the Real Networks Real Media system, Microsoft Windows Media Services, and the Apple Quicktime system.

### 1.2 Supported technologies

The following technologies are supported:

- Real Media system from Real Networks
- Windows Media System from Microsoft

### 1.3 Methods of access to Streaming Media Services

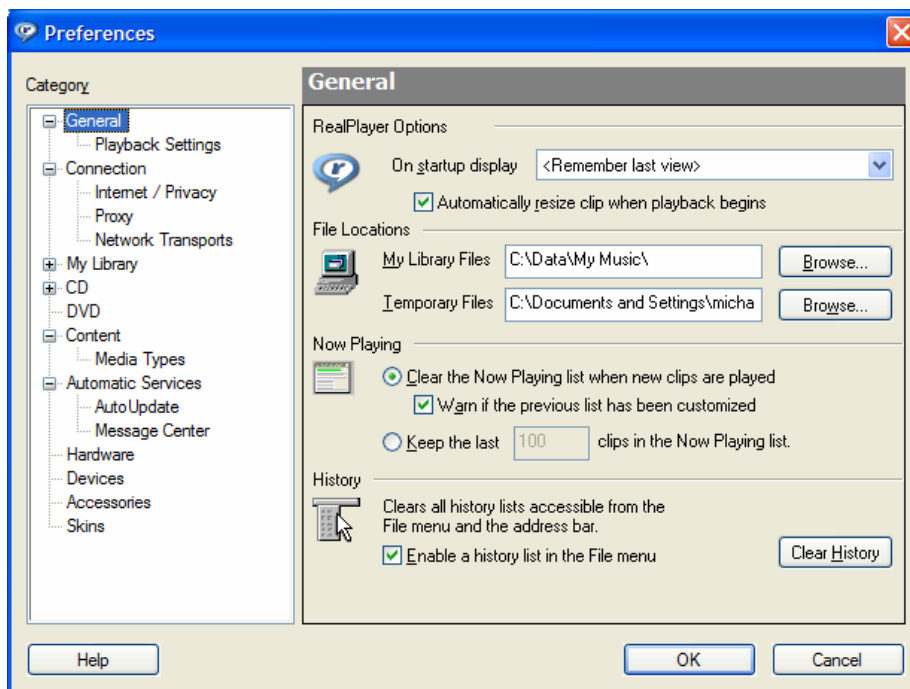
Workstations connected to the Medway Grid for Learning can access streaming media in three ways

- Via the central streaming media proxy
- Via a local streaming media proxy
- Via transparent redirection to a local cache/splitter

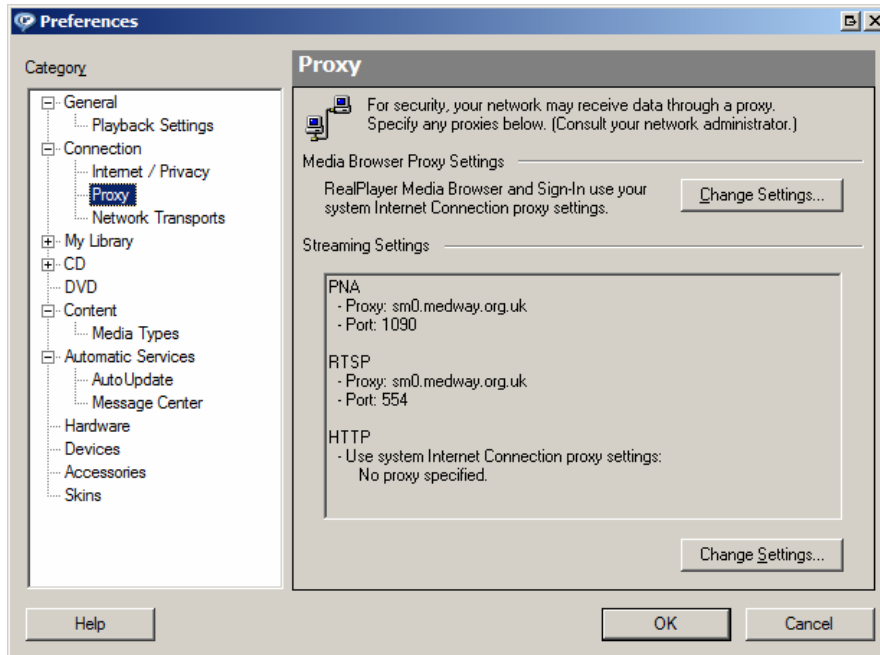
The following sections on Windows Media Player and RealOne Player configuration relate to the first access method, where workstations are configured to connect directly to the central server. This method is suitable for the concurrent use of a limited number of workstations in a school. The number of streams which can be received simultaneously is limited by the available bandwidth at your site and the bandwidth of each stream being received (audio only streams generally consume 30-60kbps of bandwidth and audio/video streams around 130-500kbps, therefore a typical site after the 2006 upgrade programme could receive approximately 75 audio streams or 10 audio/video streams).

## 2 RealOne Player configuration

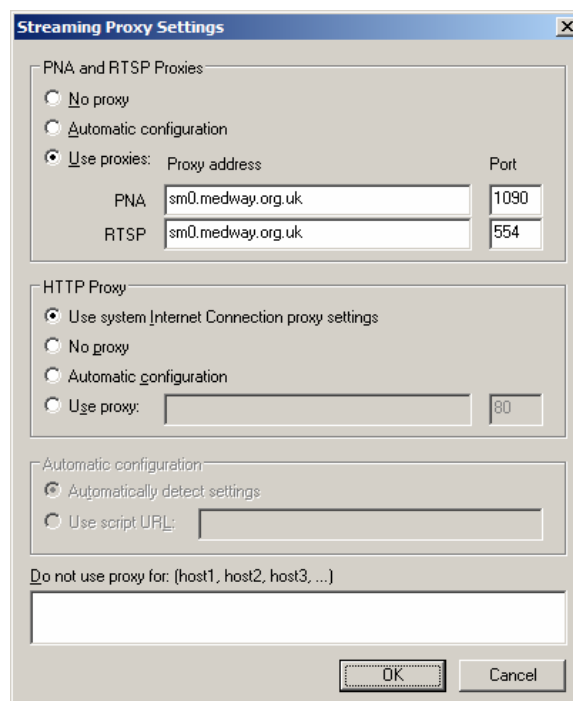
- a) Open RealOne Player – you should have version 9 or later (version 10.5 build 6.0.12.1741 was current at 01/02/2007)
- b) Click Tools / Preferences – the screen below should be displayed.



c) Click “proxy”



d) Click “Change Settings” – enter the settings as shown below, except use port 554 not 555.



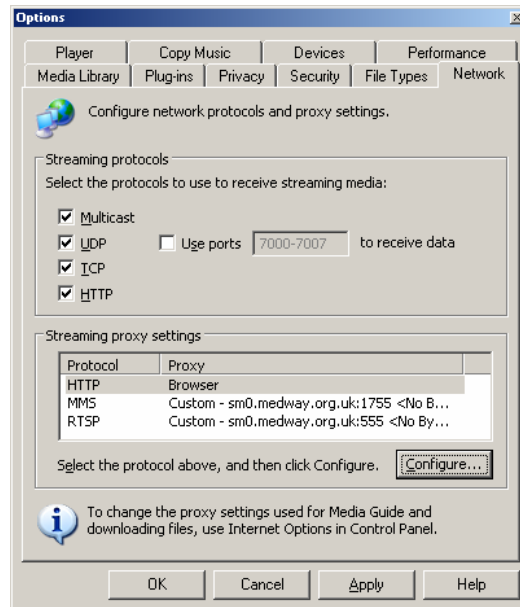
e) Click OK twice to save the configuration. RealOne Player is now ready to use.

### 3 Windows Media Player configuration

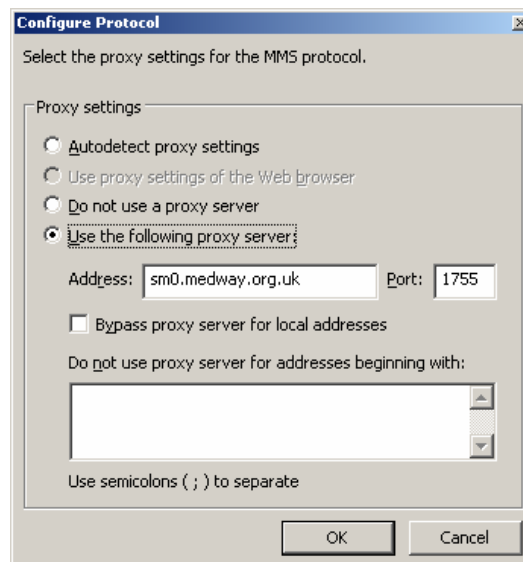
Ensure you are running Windows Media Player version 9 or higher (version 10.00.00.4019 was current at 24/04/2006). The latest version is available from the Microsoft Windows Update site at <http://update.microsoft.com/>

a) Start Windows Media Player

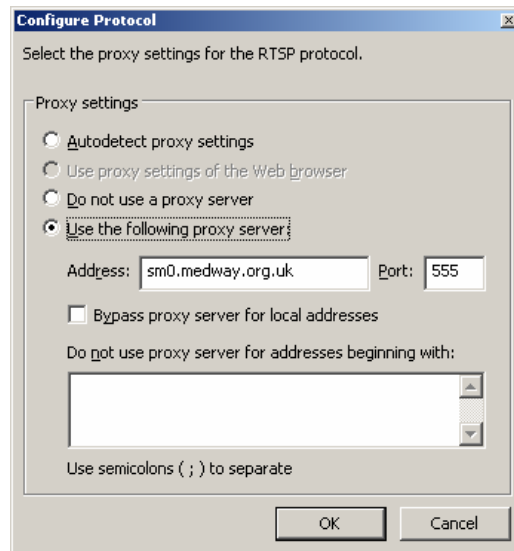
b) Select the Tools / Options / Network tab so that a windows similar to the one below is shown



c) Click on the MMS line in the “streaming proxy settings” box and click “configure”. Then enter “sm0.medway.org.uk” in the appropriate box as shown below.



Click on the RTSP line in the “streaming proxy settings” box and click “configure”. Then enter “sm0.medway.org.uk” in the appropriate box as shown below, and ensure the Port is set to 554 not 555.



Click OK, OK, to return to the main Windows Media Player screen. Configuration is now complete.

#### 4 Sites to visit after configuration

The following sites have both Real Media and Windows Media sources:

<http://www.bbc.co.uk/>

<http://news.bbc.co.uk/>